



# HEDIS<sup>®</sup> Lunch and Learn

December 2023

Provider and Member Incentives for 2024




Sherry Griffith RN, BSN

---

**Provider Incentives**  
**\*\*Effective 1/1/2024\*\***

---

Provider Incentive	REWARD	ACTION
PRSI Form Incentive 	\$20 per eligible form	Completed PRSI form must be faxed to <b>1-844-330-1001</b> Eligible forms must be or have the following criteria: <ul style="list-style-type: none"> <li>• Aetna Better Health of WV members only / not have another primary insurance</li> <li>• W-9 form on file (if not already submitted)</li> <li>• Must list all the member's available contact information</li> <li>• Entire form must be completed</li> <li>• Must be received within 60 days of first prenatal visit</li> </ul> <a href="https://www.wvdhhr.org/mcfh/wv_prenatalriskscreeninginstrument2016.pdf">https://www.wvdhhr.org/mcfh/wv_prenatalriskscreeninginstrument2016.pdf</a>
Pregnant Members Postpartum Care (PPC)	\$75 per eligible claim	<ul style="list-style-type: none"> <li>• Claim must be billed with a valid CPT code by the provider/group.</li> </ul>
Breast Cancer Screening (BCS)	\$25 per eligible claim	<ul style="list-style-type: none"> <li>• Claim must be billed with a valid CPT code by the provider/group.</li> </ul>
Eye Exam for Patient with Diabetes (EED)	\$50 per eligible claim	<ul style="list-style-type: none"> <li>• Claim must be billed with a valid CPT code by the provider/group.</li> </ul>

---

**Member Incentives**  
**\*\*Effective 1/1/2024\*\***

---

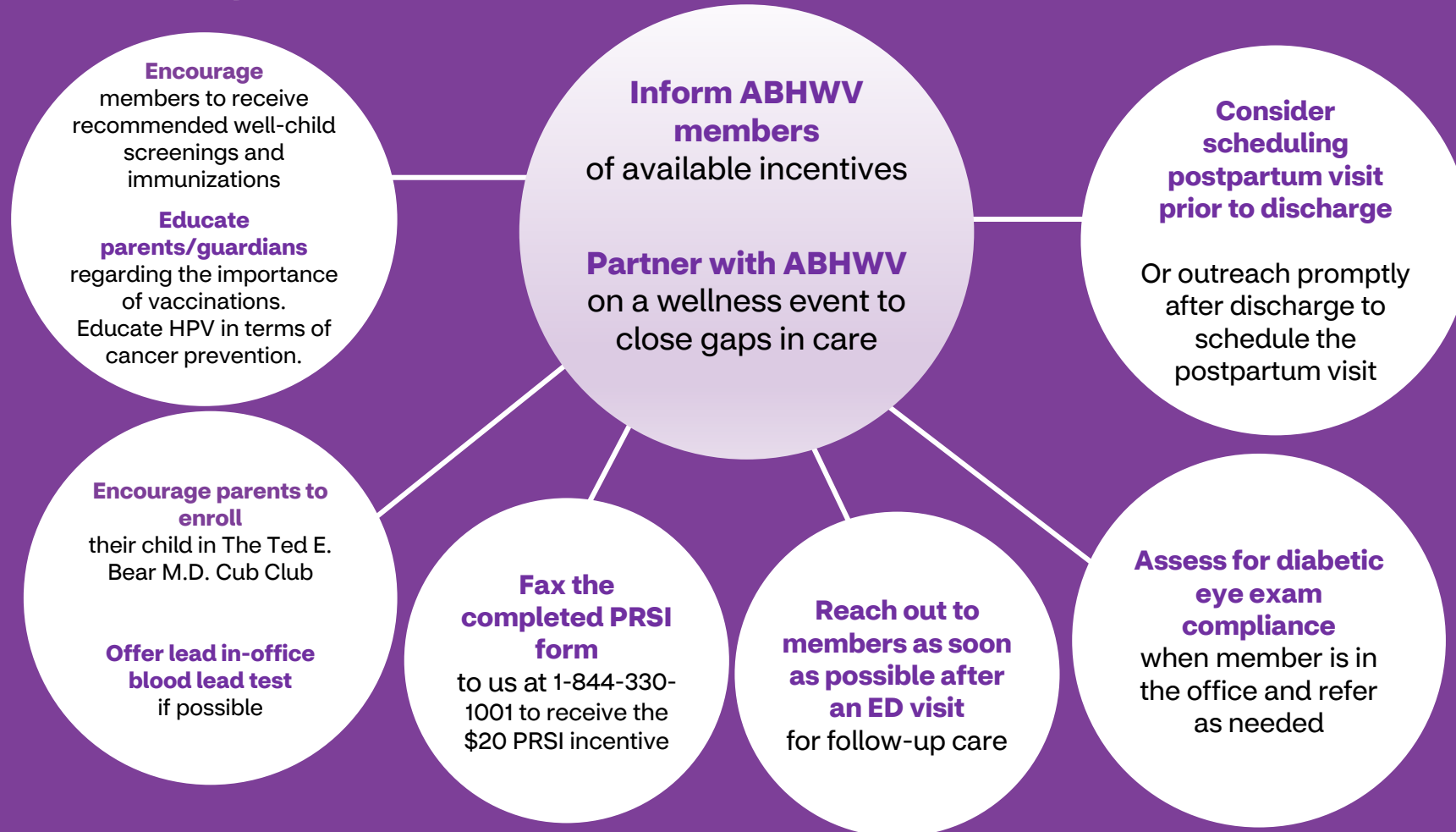
WHO'S ELIGIBLE	REWARD	ACTION
Members 12-21 (WCV- Well Care Visit)	\$25 Gift Card	Have a well care exam completed during the calendar year.
Members who attend Aetna sponsored wellness event *Wellness events can be designed in the areas of: well woman, diabetes, and well child.	\$25 Gift Card	Attend scheduled Aetna Better Health of West Virginia sponsored wellness event.
Members 13 years of age (IMA Combo 2)	\$50 Gift Card *	Complete HPV series, Tdap, and Meningococcal by the 13 <sup>th</sup> birthday.
Members 2 years of age (CIS Combo 10)	\$50 Gift Card *	Complete DTaP, IPV, MMR, Hib, Hep B, VZV, PCV, Hep A, Rotavirus, and Influenza vaccines by the 2nd birthday.
Members 2 years of age (LSC) *	\$25 Gift Card	Complete a blood lead test by the 2nd birthday.
Members with Diabetes (EED)	\$50 Gift Card *	Complete diabetic eye exam during the calendar year.
Members with Diabetes <b>**Select counties only</b>	\$25 Gift Card	Enroll in an approved diabetic education program and complete classes/HbA1c testing.
Pregnant members (PPC-Prenatal Care)	Pack-N-Play	Attend 6 or more prenatal visits.
Pregnant members (PPC-Postpartum Care)	\$50 Gift Card	Postpartum visit completed within 7-84 days after delivery.
Pregnant members with substance use disorder during pregnancy	Baby Carrier or Pack-N-Play  Child's Push Toy	Mother and baby must successfully complete the Neonatal Abstinence Syndrome (NAS) Program through Case Management.
Women ages 50-74 (BCS)	\$50 Gift Card	Complete a mammogram during the calendar year.
Women ages 21-64 (CCS) *	\$50 Gift Card	Complete a cervical cancer screening/pap test during the calendar year.
Members 6 and older (FUM) *	\$25 Gift Card	Complete visit within 7 days after behavioral health ED visit.
Members 6 and older (FUM) *	\$25 Gift Card	Complete visit within 30 days after behavioral health ED visit.
Members 13 and under	Various prizes Unique to each activity/challenge	Join the Ted E. Bear, M.D. Cub Club to complete quarterly challenges with a focus on wellness and building healthy behaviors. (Examples – Immunizations, healthy eating, physical activity, dental care)
Adult members 18 and older	State Park Gift Card	Receive a flu shot.
Adult members 18 and older	\$25 Gift Card	Adult 8-Week Walking Program-Members receive a pedometer and log for tracking steps, and receive a gift card upon completion.
Members with Congestive Heart Failure	Weight Scales	Enroll and participate in Case Management.

—

# Take-Aways

—

# Take-Away Actions -



# ABHWV website - Provider HEDIS Section

There is now a HEDIS tab within the Provider Tab on the ABHWV website. The following are now available:

1. **What is HEDIS?** – a short description of HEDIS
2. **HEDIS News You Can Use** –emailed to providers each month and will be available on the website, including current and prior months
3. **HEDIS Toolkit For Provider Offices** – comprehensive document of all HEDIS measures, including a coding/billing section. This is updated annually or sooner as needed.
4. **HEDIS Lunch and Learn Webinars For Providers** – monthly webinars such as the one today. Links for past webinars and invite information for the next upcoming Lunch and Learn will be here.

<https://www.aetnabetterhealth.com/westvirginia/providers/hedis.html>



# Closing Thoughts and Resources

## Members trust you!

Patients consider you their most trusted source of health and medical information.

Your guidance and encouragement is critical in their health management.

Allow time for discussion and questions. Hearing your answers can help patients feel more confident and comfortable.

## ABHWV Quality Partnerships

**Melani McNinch, Senior Mgr,  
ABHWV Quality HEDIS Manager**

[ABHWVHEDIS@aetna.com](mailto:ABHWVHEDIS@aetna.com)

**Sherry Griffith, ABHWV Quality  
HEDIS Project Manager**

[ABHWVHEDIS@aetna.com](mailto:ABHWVHEDIS@aetna.com)

304-348-2009

### EMR data file transfer options

**Tosha Morris**

[ABHWVHEDIS@aetna.com](mailto:ABHWVHEDIS@aetna.com)

304-348-2003

### Wellness Event Partnering

**David Roberts**

[ABHWVHEDIS@aetna.com](mailto:ABHWVHEDIS@aetna.com)

304-539-9046

## Other Resources

**ABHWV Integrated Care  
Management Referral**

Fax 844-330-1001  
Call 1-888-348-2922